

32 ft 2020 Boston Whaler 320 Vantage, RO'S BELLE

US\$289,990

Vero Beach, Florida, United States



Boat Details

Make:	Boston Whaler	Class:	Dual Console	Heads:	1
Model:	320 Vantage	Hull Material:	Fiberglass	Fuel Type:	Gas/Petrol
Year:	2020	Beam:	10 ft 4 in		
Length:	32 ft	Boat Location:	Vero Beach, Florida, United States		
Price:	US\$289,990	Name:	RO'S BELLE		
Condition:	Used	Cabins:	1		



Manuel Ocampo | ROYAL MARINE YACHT GROUP

3120 NW 99th Court, Miami, Florida, United States

Tel: **3056101031**

info@royalmarine.net

www.royalmarine.net

Description

The 320 Vantage is the Swiss Army Knife of boats. Whatever activities are the choice of the day, the Vantage has you covered; cruising, entertaining, fishing, water sports...Innovation award winner, overbuilt Whaler construction, very low hours and joy stick control.

Information & Features

2020 Mercury 300 V8 DTS (Engine 1)

Type:	Outboard Four-Stroke	Power:	300 hp
Fuel Type:	Gas/Petrol		
Hours:	227		

2020 Mercury 300 V8 DTS (Engine 2)

Type:	Outboard Four-Stroke	Power:	300 hp
Fuel Type:	Gas/Petrol		
Hours:	227		

Dimensions

LOA:	32 ft 1 in	Min Draft:	1 ft 10 in
Beam:	10 ft 4 in	Deadrise At Transom:	21 °
Max Bridge Clearance:	8 ft 9 in		

Weights

Dry Weight:	9,800 lb
Displacement:	13,142 lb

Seating

Max Passengers: **14**

Tanks

Fuel:	1 x 285 gal
Fresh Water:	1 x 30 gal
Holding:	1 x 7 gal

Accommodations

Cabins:	1
Heads:	1

Other

Hull Shape:	Modified Vee
Flag Of Registry:	United States
Builder:	Boston Whaler

Additional Equipment

- Joystick Control

Manufacturer Provided Description

Cutting-Edge features, great capacity and easy adaptability are hallmarks of the Dual-Console 320 Vantage®, winner of the National Marine Manufacturers Association's Innovation Award. Rock-Solid control meets the ultimate in versatility and comfort with the many accessories and options the 320 provides. Serious fishing, joyful entertaining, Day-Long watersports or cruising and even a place to sneak in a nap or an overnight stay, the 320 is ready for your day. When the softest, safest ride meets the best equipped dual-console around, new possibilities become eminently possible. With Whaler, you can be confident to the core.

- Uniquely convertible portside seating offers an array of configurations
- Spacious open bow features backrests, a large under-seat cooler, an optional bow table and more
- A cockpit utility center includes a sink, 18-gallon cooler and prep surface, plus optional grill and fridge
- Below deck, a cozy interior seating area offers a break from the weather
- Two touchscreens at the helm feature available Raymarine® electronics and VesselView display

Vessel Walkthrough and Details

Forward is a concealed chain locker with windlass, through bow anchor chute and bow rider U-Shaped seating. Under the hardtop is the bridge deck with helm and galley to starboard, dinette style seating to port. The enclosed cabin is to port, enclosed head compartment to starboard. Aft is a large cockpit with transom and side doors.

Main Salon:

- Desert tan hull and under hardtop color
- Anchor locker with through bow anchor chute, Delta plow anchor, chain, rode, Quick windlass
- Forward spreader light, stereo speakers, stereo remote, 12 volt receptacle
- Forward cushions, backrests and bolsters for U shaped seating area
- Split bow rail, molded in insulated under seat cooler, fresh water shower
- Pop up bow and spring cleats
- Opening center windshield and walk through opening/block off panel
- Port console with convertible berth, skylight, vent, storage, wood flooring and cabinets
- Starboard console, porcelain head, teak seat, wood flooring and cabinets, sink
- Very clear three-sided enclosure, aft drop curtain
- Hardtop with hull color underside, recessed running lights, two opening overhead hatches
- Forward and two aft spreader lights, white top frame
- Fishing package with 5 rod hardtop rocket launcher and 3 transom rod holders
- Raw water washdown, transom shower, live well
- Cockpit utility/day galley with drawers, trash can cabinet, sink, countertop, Isotherm refrigerator
- Two portable tables for three locations; aft cockpit, dinette and forward seating area
- In deck storage, under seating storage, cockpit speakers
- Convertible lounge seating or flat for sun pad, seat cover
- Cockpit bolsters, transom door, side dive door with swim ladder
- Machinery room below deck for pumps, holding tank, Atwood 2000 bilge pumps, steering...
- Docklines, fenders, eight life jackets, pop up cleats, stern cleats with hawse pipes
- Two in deck fish boxes, courtesy lighting
- Molded port and starboard swim platforms, swim ladder starboard side
- Large fold away forward facing cockpit bench seat with backrest

Electronics and Helm:

- Ritchie compass, courtesy light, windshield wipers, horn, windlass remote
- Remote-control spotlight, underwater lights, trim tabs
- Bridge deck speakers, Fusion MS-RA70NSX stereo, Mercury engine display, Raymarine VHF radio
- Raymarine multi-function chart plotter depth display with through hull depth transducer
- Whaler helm seat with bolster and electric high/low pedestal
- Forward/aft facing companion double seat

Electrical:

- 30 amp shore power
- Four AGM batteries with battery switches and breaker panel

- ProMariner ProSports 20 battery charger

Engine Details and Mechanical Equipment:

- Mercury engine controls and joystick with sky hook, Mercury Smartcraft engine display
- Mercury 300 V8 DTS engines with 227 hours; 200 hour service already accomplished
- Engines trim up all the way out of the water when at rest

Exclusions

- Seller's Personal Property

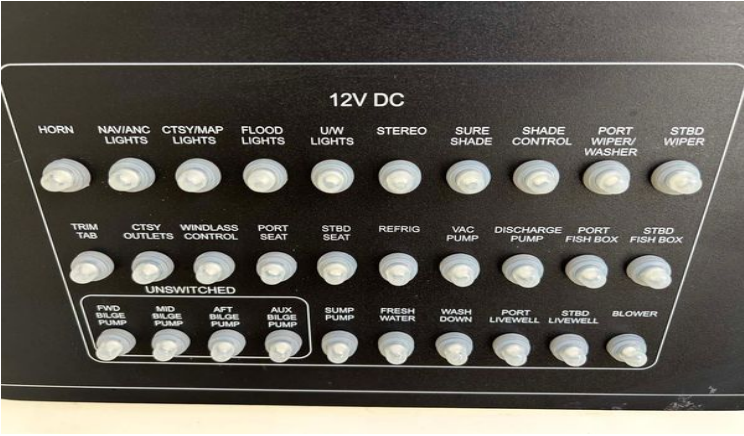
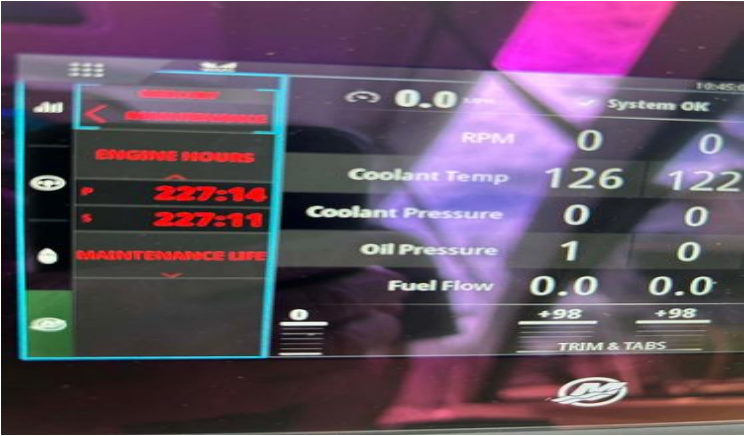
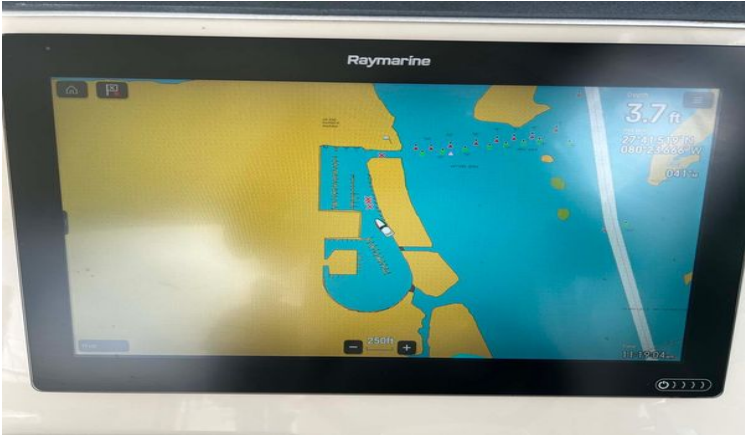
Mechanical Disclaimer

Engine hours are as of the date of the original listing and are a representation of what the listing broker is told by the owner and/or actual reading of the engine hour meters. The broker cannot guarantee the true hours. It is the responsibility of the purchaser and/or his agent to verify engine hours, warranties implied or otherwise and major overhauls as well as all other representations noted on the listing brochure.

Disclaimer

The company offers the details of this vessel in good faith but cannot guarantee or warrant the accuracy of this information nor warrant the condition of the vessel. A buyer should instruct his agents, or his surveyors, to investigate such details as the buyer desires validated. This vessel is offered subject to prior sale, price change or withdrawal without notice.

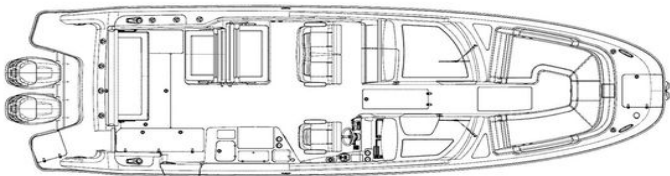












Manufacturer Provided Image